

## TICKETS & SUBSCRIPTIONS



Credit card purchases are available online at [www.early-music.org](http://www.early-music.org) for single and senior tickets, season subscriptions, and donations. Tickets at the door are available by cash and check only (\$20 regular/\$15 senior/\$5 student).

### New This Season

**Subscriber Concierge:** Avoid the box office lines and go directly to the Preferred Seating area, where you will check in with our concierge.



**Bring A Friend:** Each subscriber can bring a friend FOR FREE to one concert this Season. However, you must contact us at least 10 days in advance of the concert to reserve a seat for your friend. Call 377-6961 and leave a message, or go to [www.early-music.org](http://www.early-music.org) and use the "Contact Us" form.

TEMP is a proud member of the Classical Music Consortium of Austin.



This project is funded and supported in part by the City of Austin through the Cultural Arts Division and by a grant from the Texas Commission on the Arts and an award from the National Endowment for the Arts, which believes that a great nation deserves great art.

# TEXAS EARLY MUSIC PROJECT

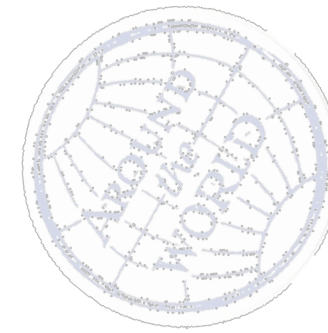
## Amazing destinations await...

Texas Early Music Project (TEMP) invites you to explore more than 700 years of musical change and evolution. Over the course of six programs, you'll be transported by the sounds of rich and diverse cultures while tasting the harmonic palettes and musical delights of our ancestors. You'll hear some old (very old) classics and discover many "new" ancient tunes. Single tickets are available at the door and online and specially discounted Season Subscriber packages can also be purchased using the order form in this mailer or at [www.early-music.org](http://www.early-music.org).

## Preserving the Past. Enriching the Present. Engaging the Future.

### About the Founder and Artistic Director Daniel Johnson

In the spring of 2009, TEMP Founder and Artistic Director, Daniel Johnson, added **Austin Arts Hall of Fame** inductee to his lengthy list of accolades and awards. Since its formation by Johnson in 1987, the Texas Early Music Project has thrilled Austin audiences with intriguing and innovative concerts. Johnson specializes in the music of the Cantigas de Santa Maria, the Sephardim, and the works of the troubadours, as well as the early Baroque works of Monteverdi and Charpentier. He also has toured extensively in the United States, Europe, Asia and the Middle East, performing Medieval, Renaissance, and Baroque music both as a soloist and ensemble member in such groups as the New York Ensemble for Early Music, Sotto Voce (San Francisco), and Musa Iberica (London) and The Clearlight Waites (Austin).



## TEXAS EARLY MUSIC PROJECT

2905 San Gabriel #204  
Austin, TX 78705



## JOIN US ON A

# Wondrous JOURNEY



## TEXAS EARLY MUSIC PROJECT 2010-2011 SEASON



**Convivencia: The Three Worlds of Renaissance Spain**

*Friday, September 24 at 8 PM, University Presbyterian Church*  
*Saturday, September 25 at 8 PM, Our Lady of Guadalupe Catholic Church*  
*Sunday, September 26 at 3 PM, First Presbyterian Church*

Our season opens with a musical exploration of the relationships between the three great cultures (Muslim, Jewish, and Christian) that coexisted peacefully on the Iberian Peninsula in the Middle Ages and the early years of the Renaissance. Medieval and Middle-Eastern songs and dances alternate with 16<sup>th</sup> century Spanish polyphony for voices, viols, lutes, and winds.

*Special guest artists: Tom Zajac (historical winds, percussion), Annette Bauer (recorders), & Kamran Hooshmand (santur, oud)*

**The Splendors of Naples**

*Friday, October 29 at 8 PM, St. Mary Cathedral*  
*Sunday, October 31 at 3 PM, First Presbyterian Church*

In collaboration with UT musicologist and Neapolitan Dr. Guido Olivieri, we celebrate the 300<sup>th</sup> anniversary of Giovanni Battista Pergolesi's birth with this inspiring collection of Neapolitan sacred music from the 16<sup>th</sup> to the 18<sup>th</sup> centuries. Our program will cover the groundbreaking music of the late Renaissance avant-garde composer Gesualdo, the 17<sup>th</sup> century composers Scipione Stella and Francesco Provenzale, as well as the beautifully crafted music of the late-Baroque composer Pergolesi. A small orchestra of period instruments led by our acclaimed concertmistress, Laurie Young Stevens, will accompany TEMP soloists and vocal ensembles.

*Special guest artist: Ryland Angel, counter-tenor*



**From Notre-Dame to St. Mary Cathedral**

*Saturday, March 26 at 8 PM (one performance only), St. Mary Cathedral*

From meditative chant to rousing polyphony, this concert explores the groundbreaking and innovative music of Léonin and Pérotin, the most important members of the 12<sup>th</sup> century School of Notre-Dame, whose contributions to the world of sacred music were the foundation for almost all the music we enjoy today in the Western world. TEMP is proud to be collaborating with Dr.

Rebecca Baltzer, recognized worldwide as an expert on the music of Notre-Dame Cathedral during the Middle Ages. This *a cappella* concert will be performed by ten voice, male ensemble in the resplendent acoustic of St Mary Cathedral.

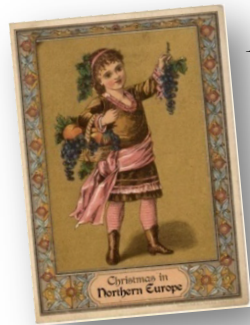
*Special guest artists: founding TEMP member Dr Christopher LeCluyse, tenor & Temmo Korisbeli, tenor*

**Siren Song: Sephardic Songs of Fantasy and Love**

*Friday, May 6 at 8 PM, First English Lutheran Church*  
*Saturday, May 7 at 8 PM, First English Lutheran Church*

This sensual and exotic music illuminates the lives of Sephardic Jews after their expulsion from Spain. Flavors of the Iberian Peninsula, the Middle East, and the Balkans swirl through the melodic ornaments and hypnotic rhythms, exhibiting the fruits of Artistic Director Daniel Johnson's continued research into this repertoire and its traditions.

*Special guest artists: Annette Bauer (recorders) & Kamran Hooshmand (santur, oud)*



**An Early Christmas in Northern Europe**

*Friday, December 10 at 8 PM, First English Lutheran Church*  
*Saturday, December 11 at 8 PM, First English Lutheran Church*

We honor the season with a diverse selection of Christmas music from the cultures and the composers who created our holiday traditions! Serenely passionate chants and

dance-like carols from Germany & France, beautiful Celtic lullabies and festive English wassails, performed by solo voices, small chorus, harps, violin, and continuo will delight your ears and hearts.

*Special guest artists: historical harpists Therese Honey & Becky Baxter*

**Fleur-de-LYS: Laurie Young Stevens and Friends**

*Friday, February 4 at 8 PM, St. Mary Cathedral*  
*Sunday, February 6 at 3 PM, St. Michael's Episcopal Church*

Our award-winning concertmistress leads a performance of superlative Baroque chamber music, featuring Dutch recorder virtuoso Paul Leenhouts, who was recently named the Director of Early Music Studies at the University of North Texas in Denton. This group of international artists comes together once a year for the pleasure of collaborating with Ms. Stevens on a concert that is always of the highest professional and musical quality.



**Mail-Back Subscription/Donation Panel**

Mail this panel with your information to:

**Texas Early Music Project**  
**2905 San Gabriel, Suite 204**  
**Austin, Texas 78705 512-377-6961**

Make checks payable to: **Texas Early Music Project or TEMP.**  
 No tickets will be mailed. All subscribers will receive notification of their ticket order by (indicate one):

Phone  Email  US Mail

**Subscriber Information**

Name: \_\_\_\_\_  
 Address: \_\_\_\_\_  
 City/State/Zip: \_\_\_\_\_  
 Phone: \_\_\_\_\_  
 Email: \_\_\_\_\_

*Email to be used for concert announcements only.*

**Order Season/Preferred Seating Subscription**

All subscribers have access to preferred seating. All subscribers **must** choose their preferred dates of attendance when purchasing tickets.

Regular Full: \_\_\_\_\_ X \$110 = \$ \_\_\_\_\_  
 Seniors Full: \_\_\_\_\_ X \$83 = \$ \_\_\_\_\_  
 Regular Partial (4 concerts): \_\_\_\_\_ X \$72 = \$ \_\_\_\_\_  
 Seniors Partial (4 concerts): \_\_\_\_\_ X \$54 = \$ \_\_\_\_\_  
**Subscription Total:** \_\_\_\_\_ \$ \_\_\_\_\_

Circle the appropriate dates to indicate your reservation.

- 1. Friday 9/24 OR Saturday 9/25 OR Sunday 9/26
- 2. Friday 10/29 OR Sunday 10/31
- 3. Friday 12/10 OR Saturday 12/11
- 4. Friday 2/4 OR Sunday 2/6
- 5. Saturday 3/26 (one performance only)
- 6. Friday 5/6 OR Saturday 5/7

**Make a Donation**

Shillings, grossi, ducats, florins, Euros or dollars – it all helps TEMP continue to provide fantastic concerts and meaningful educational outreach.

Donations are tax deductible.

**FAN:** Up to \$200  
**FRIEND:** \$201-\$499  
**SUPPORTER:** \$500-\$999  
**ADVOCATE:** \$1000-\$1999  
**BENEFACTOR:** \$2000-\$4999  
**PATRON:** \$5000 and above

**Donation Total:** \$ \_\_\_\_\_

I wish my donation to remain anonymous