

TEXAS EARLY MUSIC PROJECT

www.early-music.org • 512-377-6961

Experience the spectrum of Texas Early Music Project

This season we invite you to explore the long and richly varied history of early music—more than 600 years of musical transformation. Over the course of six programs, you'll be treated to a spectrum of harmonic palettes and a sparkling array of styles from masterful composers of the past.

The September and January opera concerts are delightfully different, with the first showcasing the development of the genre and the second in full comic mode, with situations and characters similar to modern sitcoms. The spectrum of music from the Spanish Renaissance is represented by sublimely somber sacred polyphony and the contrasting light and humorous *ensaladas*, equally skilled, charming, and beautiful. On the other end of the polyphonic scale is the brilliantly arching music from the Eton Choirbook and from the "Earthquake Mass" by Lowlands composer Antoine Brumel. Both repertoires employ parts for 5-12 voices and the result is both transcendently hypnotic and spectacularly moving. Our popular Christmas program is a movable feast: a smorgasbord of styles, languages, and traditions that embody our joy in the emotional warmth of the season and hopes for the New Year. The final concert, from the immensely varied Medieval manuscript, *Carmina Burana*, reflects the simple but visceral styles that were the cornerstone in the evolution of Western music. The exotic sounds of bagpipes and a medieval band mixed with clear and vibrant vocal timbres exude joyfulness.

Join us!

**Preserving the Past.
Enriching the Present.
Engaging the Future.**

Tickets & Subscriptions

Tickets are available at the door, purchasable with cash, check, or credit card: \$25 regular, \$20 senior, \$5 student with ID. You can also visit www.early-music.org for single regular, senior and student tickets, specially discounted Season Subscriptions, or for donations. Discounted Season Subscriptions can also be purchased using the order form on this brochure, payable by cash or check.

Special Services for Subscribers

Subscriber Concierge: Avoid the box office lines and go directly to the Preferred Seating area, where you will check in with our concierge.

Bring A Friend: Each subscriber can bring a friend FOR FREE to one concert this Season. However, you must contact us at least 10 days in advance of the concert to reserve a seat for your friend. Call **512-377-6961** and leave a message or send an email to boxoffice@early-music.org.

About the Founder and Artistic Director, Daniel Johnson



In the spring of 2009, TEMP Founder and Artistic Director, Daniel Johnson, added Austin Arts Hall of Fame inductee to his list of accolades and awards. Since its formation by Johnson, Texas Early Music Project has charmed Austin audiences with intriguing and innovative concerts. Johnson specializes in the music of Medieval and Renaissance Spain and France, the Sephardim, the early Baroque works of Monteverdi and Charpentier, and ballads from 17th- & 18th- century Scotland. He directs the Texas Toot Workshop and is a co-director of the Amherst Early Music Festival.



This project is funded and supported in part by the City of Austin through the Cultural Arts Division believing an investment in the Arts is an investment in Austin's future.

Visit Austin at
NowPlayingAustin.com.

TEXAS EARLY
MUSIC PROJECT

2905 San Gabriel #204
Austin, TX 78705

Experience the spectrum of Texas Early Music Project
From Baroque opera arias to ancient lusty chants. Toe tapping dances to astounding a cappella wonder. This is early music in a whole new light. Join us.

"Experientia Spectra"
TEMP 2013 2014

TEMP GOES TO THE OPERA: Aires and Arias from the 16th to the 18th Centuries

Saturday, September 21, 2013 at 8PM

First Presbyterian Church, 8001 Mesa Drive

Sunday, September 22, 2013 at 3PM

First Presbyterian Church, 8001 Mesa Drive

Experience the beauty, brilliance, and passion that the best composers from Italy, France, and England instilled in opera, from its intimate beginnings in the late 16th century through the High Baroque virtuosity of Handel. *Opening night only: a special appearance by countertenor Ryland Angel.*

ALEGRÍA: The Spanish Renaissance

Saturday, October 19, 2013 at 8PM

St. Louis King of France Catholic Church, 7601 Burnet Rd.

Sunday, October 20, 2013 at 3PM

First Presbyterian Church, 8001 Mesa Drive

The Spanish Renaissance produced some of the most poignantly beautiful music imaginable, but also much that is infectiously joyful, especially the effervescent *ensaladas* of Mateo Flecha. Voices, viols, and sackbuts will reverberate throughout the concert. Mary Springfels, viola da gamba, is our special guest. ¡Bailamos!

JOYOUS NOËL

Friday, December 13, 2013 at 8PM

First Presbyterian Church, 8001 Mesa Drive

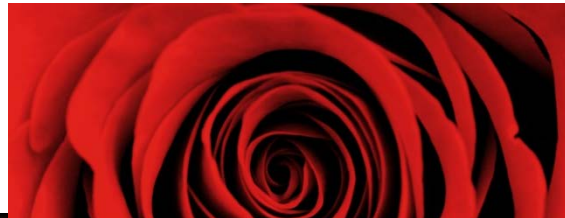
Saturday December 14, 2013 at 8PM

First English Lutheran Church, 3001 Whitis Avenue

Sunday, December 15, 2013 at 3PM

First English Lutheran Church, 3001 Whitis Avenue

Join us for Medieval, Renaissance, Baroque, and folk music from Europe and the Americas as we perform joyous carols, rollicking dances, and exquisite noëls for Christmas and the New Year. You'll be treated to a smorgasbord of musical styles and languages, some revealing the origins of our modern traditions, while others remaining unique to their time and place. Not to be missed!



COLOR US RED AS ROSES...



MYSTERIOUS INDIGO...



VERT MERVEILLEUX...



UNPREDICTABLE ÒCHRE...



SMOOTH BLUE...



FIERY ÒRANGE...

TELEMANIA

Saturday, January 25, 2014 at 8PM

First Presbyterian Church, 8001 Mesa Drive

Sunday, January 26, 2014 at 3PM

First Presbyterian Church, 8001 Mesa Drive

The Austin premiere of Georg Philipp Telemann's comic chamber opera *Pimpinone*, embellished with some of his most ravishing and progressive chamber music. TEMP regular Meredith Ruduski sings the role of Vespetta and New York's Peter Walker portrays the put-upon title character in this staged performance, set in current times. Someone has a lot of 'splaining to do!

THE CRY OF MANY VOICES: An Illuminated Renaissance

Saturday, March 29, 2014 at 8PM

St. Mary Cathedral, 203 East 10th Street

Sunday, March 30, 2014 at 3PM

First Presbyterian Church, 8001 Mesa Drive

In these compositions for 5–12 *a cappella* parts, shimmering and transparent textures alternate with lushly dense ones in music from the unique compositions of England's Eton Choirbook and from Franco-Flemish composers on the cutting edge. The reverberant voices of more than 20 singers will surround you and captivate your imaginations.

THE ORIGINAL CARMINA BURANA: Unplugged & Organic

Saturday, April 26, 2014 at 8PM

First English Lutheran Church, 3001 Whitis Avenue

Sunday, April 27, 2014 at 3PM

First Presbyterian Church, 8001 Mesa Drive

Unabashedly joyful and passionate songs about love, spring, mythology, love, dancing, drinking, *love*, flirting, philosophy, and...*love!*...from the 13th-century *Carmina Burana* manuscript. Special guests Mary Springfels and Tom Zajac will join us for one of our favorite repertoires! Rated PG-13.

Order Season/Preferred Seating Subscription

All subscribers have access to preferred seating. All subscribers must choose their preferred dates of attendance when purchasing tickets.

Regular Full: _____ X \$132 = \$ _____

Students / Seniors Full: _____ X \$100 = \$ _____

Regular Partial (4 crts): _____ X \$87 = \$ _____

Students / Seniors Partial (4 crts): _____ X \$65 = \$ _____

Subscription Total: \$ _____

Circle the appropriate dates to indicate your reservation.

TEMP GOES TO THE OPERA	Saturday, September 21, 8 PM
	Sunday, September 22, 3 PM
ALEGRÍA	Saturday, October 19, 8 PM
	Sunday, October 20, 3 PM
JOYOUS NOËL	Friday, December 13, 8 PM
	Saturday, December 14, 8 PM
	Sunday, December 15, 3 PM
TELEMANIA	Saturday, January 25, 8 PM
	Sunday, January 26, 3 PM
THE CRY OF MANY VOICES	Saturday, March 29, 8 PM
	Sunday, March 30, 3 PM
THE ORIGINAL CARMINA BURANA	Saturday, April 26, 8 PM
	Sunday, April 27, 3 PM

Subscription & Donation Form

Purchase season subscriptions with a credit card at www.early-music.org
OR mail this panel with your information to:

Texas Early Music Project

2905 San Gabriel, Suite 204

Austin, Texas 78705 512-377-6961

Make checks payable to: Texas Early Music Project or TEMP. No tickets will be mailed. All subscribers will receive notification of their ticket order by (indicate one):

Phone Email

Subscriber/Donor Information

Name: _____

Address: _____

City/State/Zip: _____

Phone: _____

Email: _____

Make a Donation (Donations are tax deductible.)

FAN: Up to \$199

BENEFACTOR: \$1,000-\$4,999

FRIEND: \$200-\$499

PATRON: \$5,000 and above

SUPPORTER: \$500-\$999

Donation Total:

\$ _____

I wish my donation to remain anonymous.