

TICKETS & SUBSCRIPTIONS

Tickets are available at the door, payable with cash, check, or credit card: \$30 general, \$25 senior (age 60+). (Individual tickets for *La Pellegrina* are \$50 for premium seating, \$40 general, \$35 senior). Discount prices for students with student ID are available for purchase at the concert door. You can also visit www.early-music.org for single general or senior tickets, season subscriptions, or donations. Season subscriptions can also be purchased using the order form on this brochure, payable by cash or check.

Special Services for Subscribers

Subscriber Concierge: Avoid the box office lines and go directly to the Preferred Seating area, where you will check in with our concierge.

Bring A Friend: Each subscriber can bring a friend FOR FREE to one concert this Season. However, you must contact us at least 10 days in advance of the concert to reserve a seat for your friend. Call 512-377-6961 and leave a message or send an email to boxoffice@early-music.org.

About the Founder and Artistic Director, Daniel Johnson



In the spring of 2009, TEMP Founder and Artistic Director, Daniel Johnson, added Austin Arts Hall of Fame inductee to his list of accolades and awards. Since its formation by Johnson, Texas Early Music Project has charmed Austin audiences with intriguing and innovative concerts. Johnson specializes in the music of Medieval and Renaissance Spain and France, the Sephardim, the early Baroque works of Monteverdi and Charpentier, and ballads from 17th- & 18th-century Scotland. He directs the Texas Toot Workshop and is a co-director of the Amherst Early Music Festival.



This project is funded and supported in part by the City of Austin through the Cultural Arts Division believing an investment in the Arts is an investment in Austin's future.

Visit Austin at NowPlayingAustin.com

TEXAS EARLY MUSIC PROJECT

www.early-music.org • 512-377-6961

Celebrate the passion, pain, pride, and beauty of Italian Medieval, Renaissance, and Baroque music from Italy

Ah, Italia! Your medieval trovatori learned the art of the troubadours; your piffari made people dance madly! Dante fell in love and, later, Landini and Ciconia boldly and beautifully paved the way for the Renaissance.

Ah, Italia! In the Renaissance, Isaac and Josquin competed for jobs, music publishers enabled the middle-class to purchase and create music, madrigals were high art, and almost every composer of note was trained in Italy by musical masters who made Italy the jewel of Renaissance music.

Ah, Italia! The Baroque would not be what we know and love today without the Florentine Camerata, a confluence of musicians, poets and intellectuals born from the same artists and philosophers who created the 1589 intermedium for *La Pellegrina*. They brought us musical theater and opera, art forms that were molded by Monteverdi to become the focus of musicians all over Europe.

Ah, Italia! We plumb the depths of your sensual and passionate beauty this season, exploring over 500 years of creativity, turmoil, love, and matchless artistry.

**Preserving the Past.
Enriching the Present.
Engaging the Future.**

!arena Italiana!
Music
2905 San Gabriel #204
Austin, TX 78705
TEXAS EARLY MUSIC PROJECT

Texas Early Music Project 2014-2015 SEASON



Italia Mia:
That's Amore!

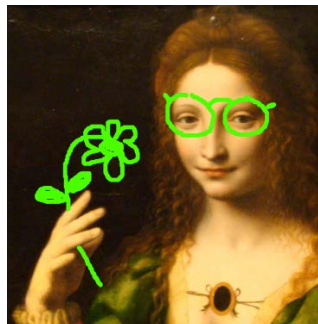
1) La Pellegrina: Music for a Medici Wedding



Saturday, September 13, 2014 at 8PM
St. Martin's Lutheran Church, 606 W. 15th St.

Sunday, September 14, 2014 at 3PM
St. Martin's Lutheran Church, 606 W. 15th St

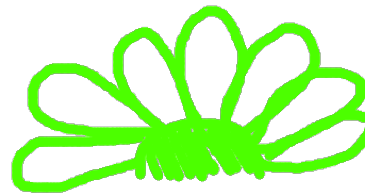
Join us for the Texas premiere of *La Pellegrina: Music for a Medici Wedding*. First performed in 1589 for the spectacular Florentine wedding of Ferdinando de Medici to Christine de Lorraine, *La Pellegrina* is a musical masterpiece of spectacular dimensions. The choir, soloists, and a full orchestra of period instruments (viols, cornetto, sackbuts, and lutes) form a stellar ensemble of over fifty performers gathered from across the country. Lawrence Rosenwald, renowned Wellesley linguist and poet, will create and perform an original poetic narrative. Sara Hessel Schneider will present the pre-concert lectures one hour before the concert starts.



2) Italia Mia: Madrigal Mystery Tour

Saturday, October 25, 2014 at 8PM
First English Lutheran Church, 3001 Whitis Avenue
Sunday, October 26, 2014 at 3PM
First English Lutheran Church, 3001 Whitis Avenue

The Italian madrigal in the 16th century was emotional, witty, daring, celebratory, passionate, sensual, experimental, and ... gorgeous! TEMP singers will perform innovative works by Lassus, da Rore, Verdelot, Rossi, Gesualdo, Monteverdi, d'India, and more for two to six parts, including Verdelot's touching title madrigal, *Italia Mia*.



3) An Early Christmas in Europe

Friday, December 12, 2014 at 8PM
First English Lutheran Church, 3001 Whitis Avenue
Saturday December 13, 2014 at 8PM
First English Lutheran Church, 3001 Whitis Avenue
Sunday, December 14, 2014 at 3PM
First Presbyterian Church, 8001 Mesa Drive

We present a Christmas celebration with Medieval, Renaissance, Baroque, Celtic and folk music from Europe and the British Isles replete with joyous carols, rollicking dances, and exquisite Noëls for Christmas and the New Year. You'll be treated to a smorgasbord of musical styles and languages, but it all adds up to Merry Christmas and Happy New Year!



4) That's Amore: An Early Valentine

Saturday, February 7, 2015 at 8PM
First Presbyterian Church, 8001 Mesa Drive
Sunday, February 8, 2015 at 3PM
First Presbyterian Church, 8001 Mesa Drive

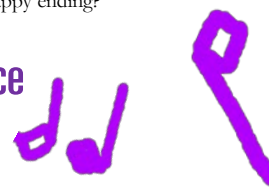
As an early Valentine present, treat yourself and your sweetie(s) to a lively, witty, and loving pastiche of beautiful music from the courts and operas in Italy, c.1600-1750. We'll tell a story that will warm your heart, make you laugh, and put your toes to tapping, featuring soprano Meredith Ruduski, bass Peter Walker, and counter-tenor Ryland Angel. Will there be a happy ending?



5) The Flowering of the Renaissance

Saturday, February 28, 2015 at 8PM
St. Mary Cathedral, 203 East 10th Street
Sunday, March 1, 2015 at 3PM
First Presbyterian Church, 8001 Mesa Drive

You'll hear serene and pious chant from Italy's monasteries, wild and saucy dances fit for Boccaccio's *Decameron* and the *ars nova*, shimmering and bold madrigals in the *ars subtilior* style by Ciconia, and progressive and iconic motets by Josquin, Isaac and others as the Renaissance bloomed across Italy.



6) The Full Monteverdi, Part 2

Saturday, May 2, 2015 at 8PM
University Presbyterian Church, 2203 San Antonio Street
Sunday, May 3, 2015 at 3PM
First Presbyterian Church, 8001 Mesa Drive

We end our love song to Italy with music by Monteverdi and his milieu: Frescobaldi, Sances, Strozzi, Cavalli, and others, with soloists, chorus, and a small instrumental ensemble.



Order Season/Preferred Seating Subscription

All subscribers have access to preferred seating. Subscribers must choose their preferred dates of attendance at time of purchase.

Full subscriptions are for 6 concerts, including *La Pellegrina*

Regular Full: _____ X \$162 = \$ _____

Seniors Full: _____ X \$135 = \$ _____

Partial subscriptions (these do not include *La Pellegrina*)

Regular Partial (4 concerts): _____ X \$108 = \$ _____

Seniors Partial (4 concerts): _____ X \$90 = \$ _____

Subscription Total: \$ _____

Circle the appropriate dates to indicate your reservation.

LA PELLEGRINA	Saturday, September 13 th , 8 PM Sunday, September 14 th , 3 PM
ITALIA MIA	Saturday, October 25 th , 8 PM Sunday, October 26 th , 3 PM
AN EARLY CHRISTMAS	Friday, December 12 th , 8 PM Saturday, December 13 th , 8 PM Sunday, December 14 th , 3 PM
THAT'S AMORE	Saturday, February 7 th , 8 PM Sunday, February 8 th , 3 PM
FLOWERING OF RENAISSANCE	Saturday, February 28 th , 8 PM Sunday, March 1 st , 3 PM
FULL MONTEVERDI: PART 2	Saturday, May 2 nd , 8 PM Sunday, May 3 rd , 3 PM

Subscription & Donation Form

Purchase season subscriptions with a credit card at www.early-music.org OR mail this panel with your information to:

Texas Early Music Project
2905 San Gabriel, Suite 204
Austin, Texas 78705 512-377-6961

Make checks payable to: **Texas Early Music Project** or **TEMP**. No tickets will be mailed. All subscribers will receive notification of their ticket order by (indicate one):

Phone Email

Subscriber/Donor Information

Name: _____

Address: _____

City/State/Zip: _____

Phone: _____

Email: _____

Make a Donation (Donations are tax deductible.)

FAN: Up to \$199 **BENEFACTOR:** \$1,000-\$4,999

FRIEND: \$200-\$499 **PATRON:** \$5,000 and above

SUPPORTER: \$500-\$999

Donation Total:
\$ _____

I wish my donation to remain anonymous.